

in&out  
**Acqua**  
and  
**Nasim**









**JOVER**

DESDE 1965

O  
R  
I  
L  
L  
O  
  
E  
D  
G  
E  
  
L  
I  
S  
I  
E  
R  
E



O  
R  
I  
L  
L  
O  
  
E  
D  
G  
E  
  
L  
I  
S  
I  
E  
R  
E

IN&OUT ACQUA 01 UV TEFLON  
Reference 03727014K

Composition: 100%PES  
Useful width in cms: 140 cm.  
Pattern repeat (height): 38  
Pattern repeat (width): 22  
Repeat for cutting cm.: 38  
Design direction: Up the roll  
Weight gsm: 600  
Suitable for upholstery.  
Martindale 85000 cycles.  
Suitable for outdoor use.  
Ligth fastness (max 8): 7  
Pilling (max 5): 5  
Anti-stain  
UV resistant  
Shrinkage (warp): -0,30 %  
Shrinkage (weft): -0,10 %



03.72701/2B



03.72701/54



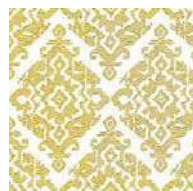
03.72701/4K



03.72701/51



03.72701/7K



03.72701/21



03.72701/8D



03.72701/5B



03.72701/5H



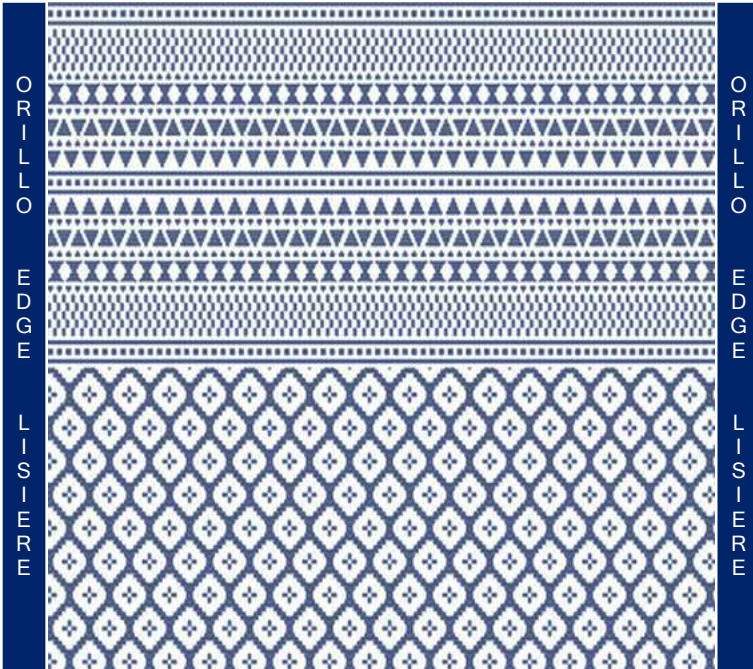
03.72701/1A



03.72701/98

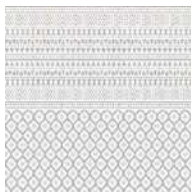
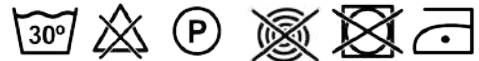
# JOVER

DESDE 1965

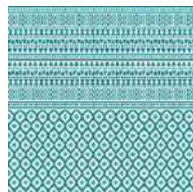


IN&OUT ACQUA 02 UV TEFLON  
Reference 03727024K

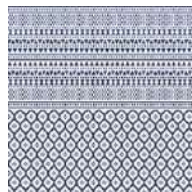
Composition: 100%PES  
Useful width in cms: 140 cm.  
Pattern repeat (height): 42  
Pattern repeat (width): 2  
Repeat for cutting cm.: 42  
Design direction: Up the roll  
Weight gsm: 600  
Suitable for upholstery.  
Martindale 85000 cycles.  
Suitable for outdoor use.  
Ligth fastness (max 8): 7  
Pilling (max 5): 5  
Anti-stain  
UV resistant  
Shrinkage (warp): -0,30 %  
Shrinkage (weft): -0,10 %



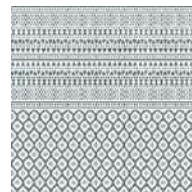
03.72702/2B



03.72702/54



03.72702/4K



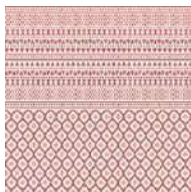
03.72702/51



03.72702/7K



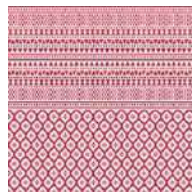
03.72702/21



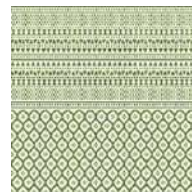
03.72702/8D



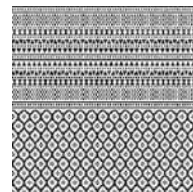
03.72702/5B



03.72702/5H



03.72702/1A

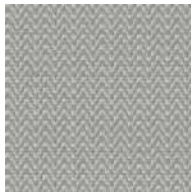


03.72702/98



**IN&OUT ACQUA 04 UV TEFLON**  
Reference 03727044K

Composition: 100%PES  
Useful width in cms: 140 cm.  
Pattern repeat (height): 1,1  
Pattern repeat (width): 1,1  
Repeat for cutting cm.: 1,1  
Design direction: Up the roll  
Weight gsm: 600  
Suitable for upholstery.  
Martindale 100000 cycles.  
Suitable for outdoor use.  
Ligth fastness (max 8): 7  
Pilling (max 5): 5  
Anti-stain  
UV resistant  
Shrinkage (warp): -0,30 %  
Shrinkage (weft): -0,10 %



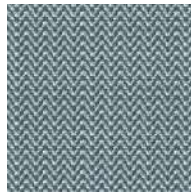
03.72704/2B



03.72704/54



03.72704/4K



03.72704/51



03.72704/7K



03.72704/21



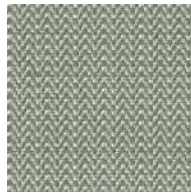
03.72704/8D



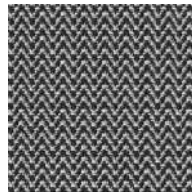
03.72704/5B



03.72704/5H



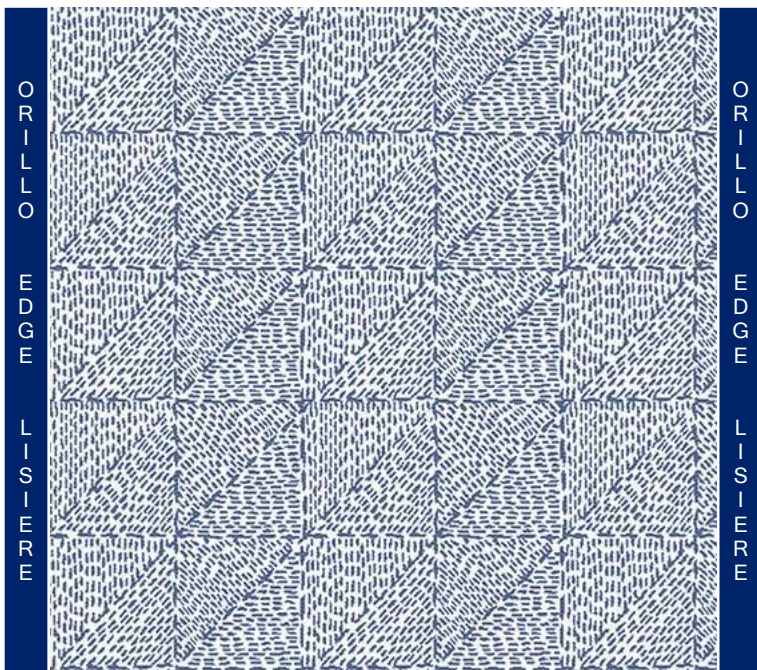
03.72704/1A



03.72704/98

# JOVER

DESDE 1965



IN&OUT ACQUA 06 UV TEFLON  
Reference 03727064K

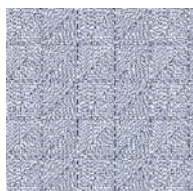
Composition: 100%PES  
Useful width in cms: 140 cm.  
Pattern repeat (height): 21  
Pattern repeat (width): 22  
Repeat for cutting cm.: 21  
Design direction: Up the roll  
Weight gsm: 600  
Suitable for upholstery.  
Martindale 85000 cycles.  
Suitable for outdoor use.  
Ligth fastness (max 8): 7  
Pilling (max 5): 5  
Anti-stain  
UV resistant  
Shrinkage (warp): -0,30 %  
Shrinkage (weft): -0,10 %



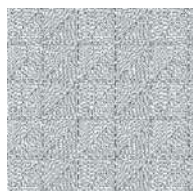
03.72706/2B



03.72706/54



03.72706/4K



03.72706/51



03.72706/7K



03.72706/21



03.72706/8D



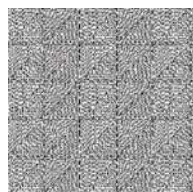
03.72706/5B



03.72706/5H

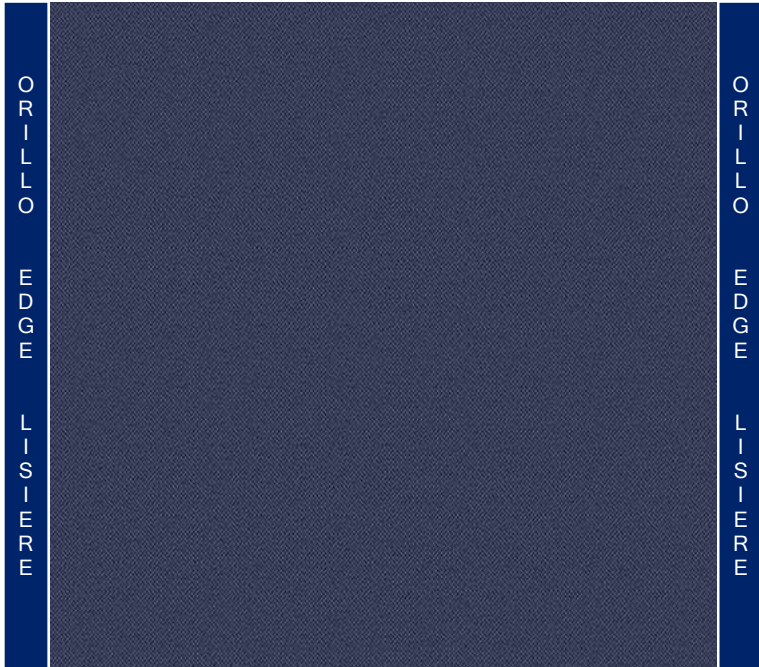


03.72706/1A



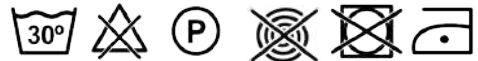
03.72706/98



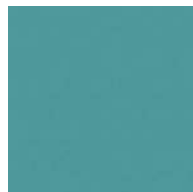


**IN&OUT ACQUA PLAIN UV TEFLON**  
Reference 03728884K

Composition: 100%PES  
Useful width in cms: 140 cm.  
Pattern repeat (height): 1  
Pattern repeat (width): 1  
Repeat for cutting cm.: 1  
Design direction: Up the roll  
Weight gsm: 464  
Suitable for upholstery.  
Martindale 90000 cycles.  
Suitable for outdoor use.  
Ligth fastness (max 8): 7  
Pilling (max 5): 5  
Anti-stain  
UV resistant  
Shrinkage (warp): -0,40 %  
Shrinkage (weft): -0,10 %



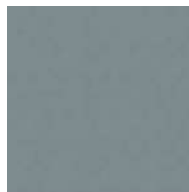
03.72888/2B



03.72888/54



03.72888/4K



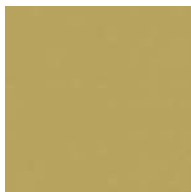
03.72888/51



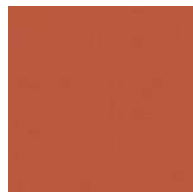
03.72888/7K



03.72888/7L



03.72888/21



03.72888/8D



03.72888/8E



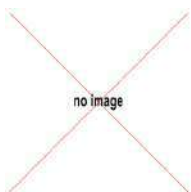
03.72888/5B



03.72888/5H



03.72888/1A



03.72888/1B



03.72888/98

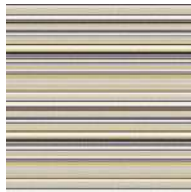


**IN&OUT ACQUA STRIPE TEFLON**  
Reference 037289004

Composition: 100%PES  
Useful width in cms: 140 cm.  
Pattern repeat (height): 23  
Pattern repeat (width): 1  
Repeat for cutting cm.: 23  
Design direction: Up the roll  
Weight gsm: 586  
Suitable for upholstery.  
Martindale 50000 cycles.  
Suitable for outdoor use.  
Ligth fastness (max 8): 7  
Pilling (max 5): 5  
Anti-stain  
UV resistant  
Shrinkage (warp): -0,10 %  
Shrinkage (weft): -0,50 %



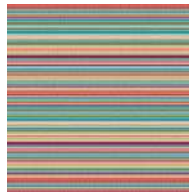
03.72890/04



03.72890/14



03.72890/01



03.72890/05



IN&OUT NASIM 12 UV TEFLON  
Reference 03727124J

Composition: 100%PES  
Useful width in cms: 140 cm.  
Pattern repeat (height): 66  
Pattern repeat (width): 32  
Repeat for cutting cm.: 66  
Design direction: Up the roll  
Weight gsm: 614  
Suitable for upholstery.  
Martindale 40000 cycles.  
Suitable for outdoor use.  
Ligth fastness (max 8): 7  
Pilling (max 5): 5  
Anti-stain  
UV resistant  
Shrinkage (warp): -0,30 %  
Shrinkage (weft): -0,30 %



03.72712/2A



03.72712/4J



03.72712/7B



03.72712/8B



03.72712/5H



03.72712/1C



IN&OUT NASIM 13 UV TEFLON  
Reference 03727134J

Composition: 100%PES  
Useful width in cms: 140 cm.  
Pattern repeat (height): 15  
Pattern repeat (width): 8  
Repeat for cutting cm.: 15  
Design direction: Up the roll  
Weight gsm: 614  
Suitable for upholstery.  
Martindale 40000 cycles.  
Suitable for outdoor use.  
Ligth fastness (max 8): 7  
Pilling (max 5): 5  
Anti-stain  
UV resistant  
Shrinkage (warp): -0,30 %  
Shrinkage (weft): -0,30 %



03.72713/2A



03.72713/4J



03.72713/7B



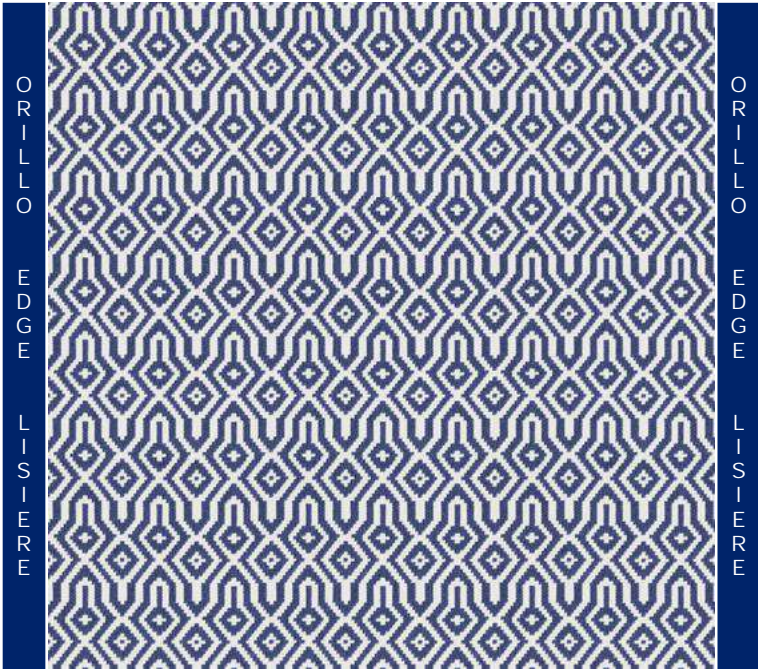
03.72713/8B



03.72713/5H



03.72713/1C

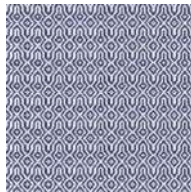


IN&OUT NASIM 14 UV TEFLON  
Reference 03727144J

Composition: 100%PES  
Useful width in cms: 140 cm.  
Pattern repeat (height): 6  
Pattern repeat (width): 5,5  
Repeat for cutting cm.: 6  
Design direction: Up the roll  
Weight gsm: 614  
Suitable for upholstery.  
Martindale 40000 cycles.  
Suitable for outdoor use.  
Ligth fastness (max 8): 7  
Pilling (max 5): 5  
Anti-stain  
UV resistant  
Shrinkage (warp): -0,30 %  
Shrinkage (weft): -0,30 %



03.72714/2A



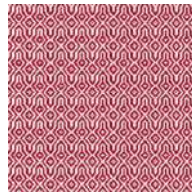
03.72714/4J



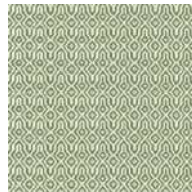
03.72714/7B



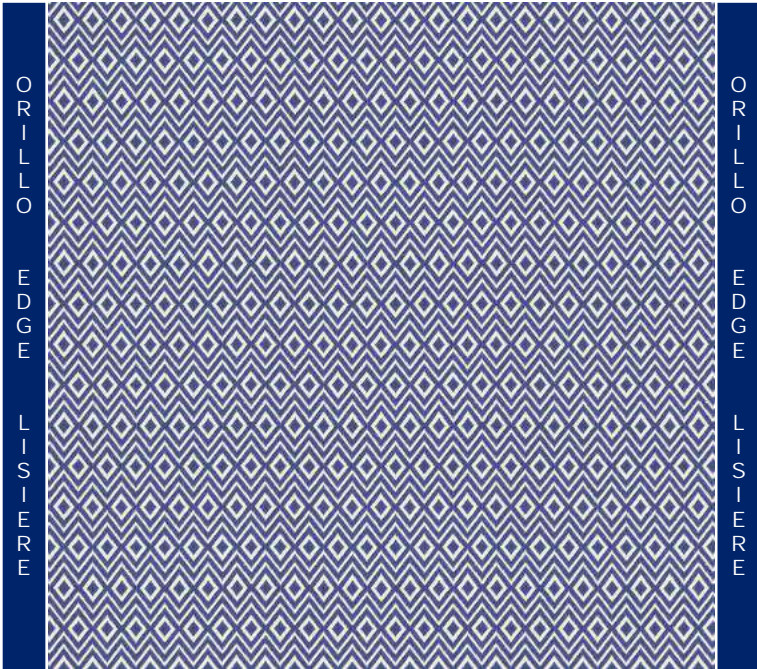
03.72714/8B



03.72714/5H



03.72714/1C

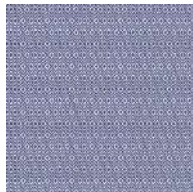


IN&OUT NASIM 15 UV TEFLON  
Reference 03727154J

Composition: 100%PES  
Useful width in cms: 140 cm.  
Pattern repeat (height): 6  
Pattern repeat (width): 2  
Repeat for cutting cm.: 6  
Design direction: Up the roll  
Weight gsm: 614  
Suitable for upholstery.  
Martindale 40000 cycles.  
Suitable for outdoor use.  
Ligth fastness (max 8): 7  
Pilling (max 5): 5  
Anti-stain  
UV resistant  
Shrinkage (warp): -0,30 %  
Shrinkage (weft): -0,30 %



03.72715/2A



03.72715/4J



03.72715/7B



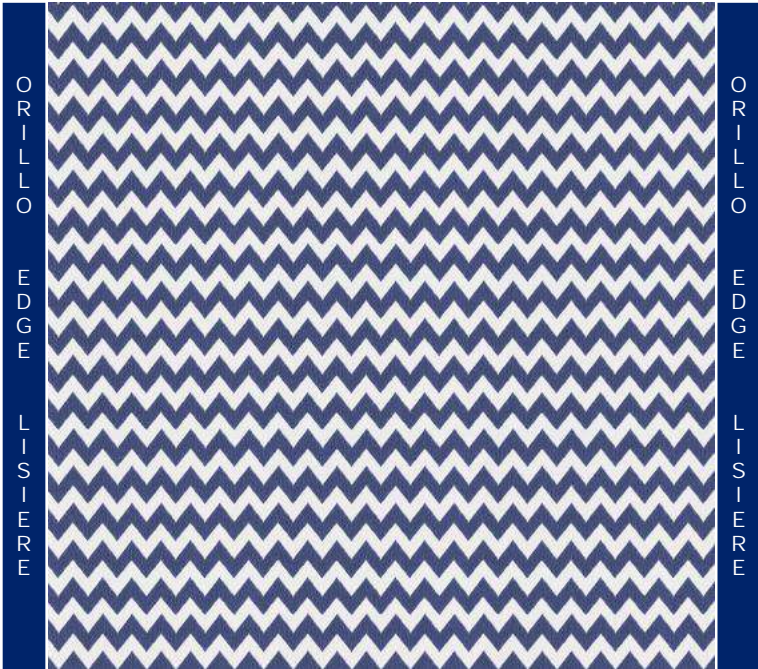
03.72715/8B



03.72715/5H

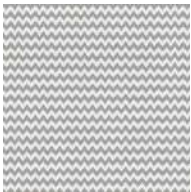


03.72715/1C



IN&OUT NASIM 16 UV TEFLON  
Reference 03727164J

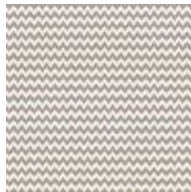
Composition: 100%PES  
Useful width in cms: 140 cm.  
Pattern repeat (height): 3  
Pattern repeat (width): 2  
Repeat for cutting cm.: 3  
Design direction: Up the roll  
Weight gsm: 614  
Suitable for upholstery.  
Martindale 40000 cycles.  
Suitable for outdoor use.  
Ligth fastness (max 8): 7  
Pilling (max 5): 5  
Anti-stain  
UV resistant  
Shrinkage (warp): -0,30 %  
Shrinkage (weft): -0,30 %



03.72716/2A



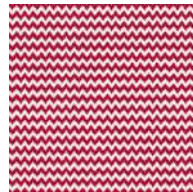
03.72716/4J



03.72716/7B



03.72716/8B



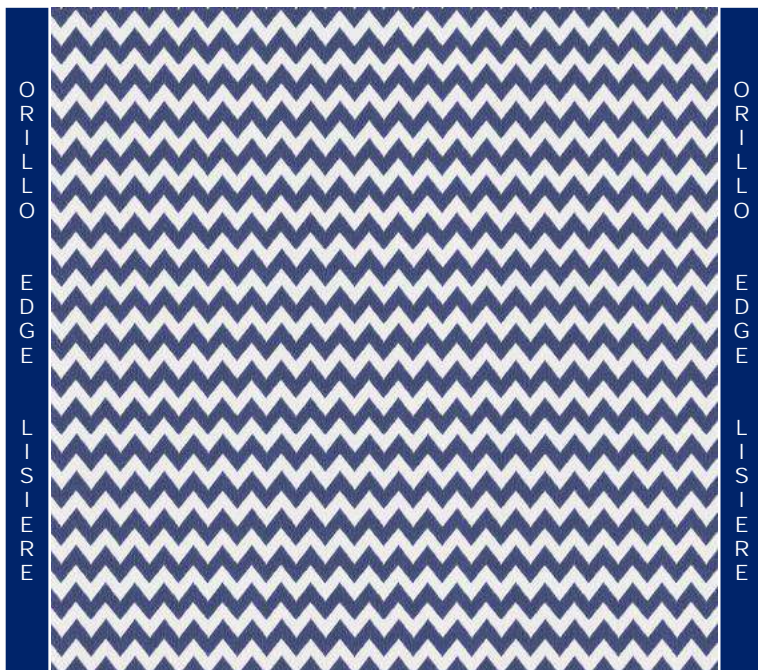
03.72716/5H



03.72716/1C

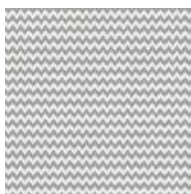
**JOVER**

DESDE 1965

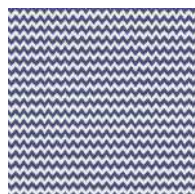


IN&OUT NASIM 16 UV WATERPROOF  
Reference 33727164J

Composition: 100%PES  
Useful width in cms: 140 cm.  
Pattern repeat (height): 3  
Pattern repeat (width): 2  
Repeat for cutting cm.: 3  
Design direction: Up the roll  
Weight gsm: 614  
Suitable for upholstery.  
Martindale 40000 cycles.  
Suitable for outdoor use.  
Ligth fastness (max 8): 7  
Pilling (max 5): 5  
Anti-stain  
UV resistant  
Shrinkage (warp): -0,30 %  
Shrinkage (weft): -0,30 %

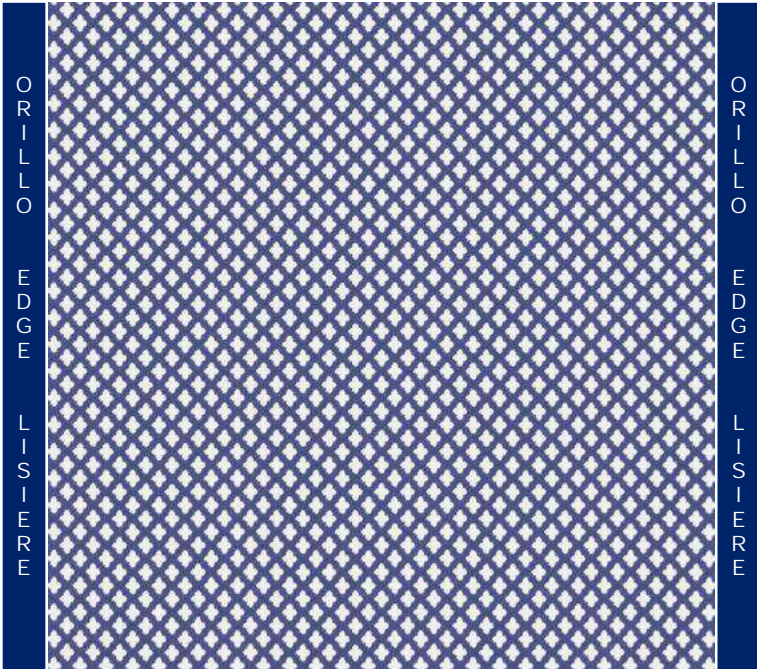


33.72716/2A



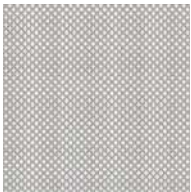
33.72716/4J



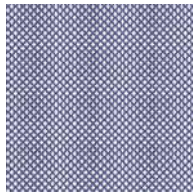


IN&OUT NASIM 17 UV TEFLON  
Reference 03727174J

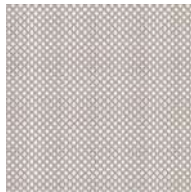
Composition: 100%PES  
Useful width in cms: 140 cm.  
Pattern repeat (height): 2  
Pattern repeat (width): 2  
Repeat for cutting cm.: 2  
Design direction: Up the roll  
Weight gsm: 614  
Suitable for upholstery.  
Martindale 40000 cycles.  
Suitable for outdoor use.  
Ligth fastness (max 8): 7  
Pilling (max 5): 5  
Anti-stain  
UV resistant  
Shrinkage (warp): -0,30 %  
Shrinkage (weft): -0,30 %



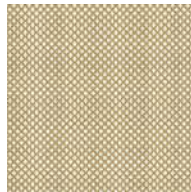
03.72717/2A



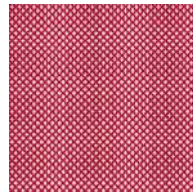
03.72717/4J



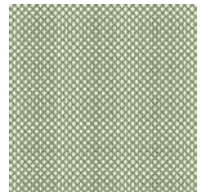
03.72717/7B



03.72717/8B



03.72717/5H



03.72717/1C

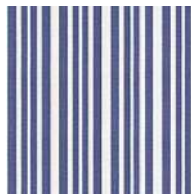


IN&OUT NASIM 18 UV TEFLON  
Reference 03727184J

Composition: 100%PES  
Useful width in cms: 140 cm.  
Pattern repeat (height): 1  
Pattern repeat (width): 11  
Repeat for cutting cm.: 1  
Design direction: Up the roll  
Weight gsm: 614  
Suitable for upholstery.  
Martindale 40000 cycles.  
Suitable for outdoor use.  
Ligth fastness (max 8): 7  
Pilling (max 5): 5  
Anti-stain  
UV resistant  
Shrinkage (warp): -0,30 %  
Shrinkage (weft): -0,30 %



03.72718/2A



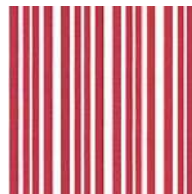
03.72718/4J



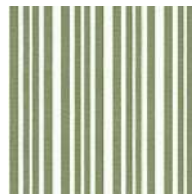
03.72718/7B



03.72718/8B



03.72718/5H



03.72718/1C

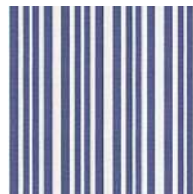


IN&OUT NASIM 18 UV WATERPROOF  
Reference 33727184J

Composition: 100%PES  
Useful width in cms: 140 cm.  
Pattern repeat (height): 1  
Pattern repeat (width): 11  
Repeat for cutting cm.: 1  
Design direction: Up the roll  
Weight gsm: 614  
Suitable for upholstery.  
Martindale 40000 cycles.  
Suitable for outdoor use.  
Ligth fastness (max 8): 7  
Pilling (max 5): 5  
Anti-stain  
UV resistant  
Shrinkage (warp): -0,30 %  
Shrinkage (weft): -0,30 %



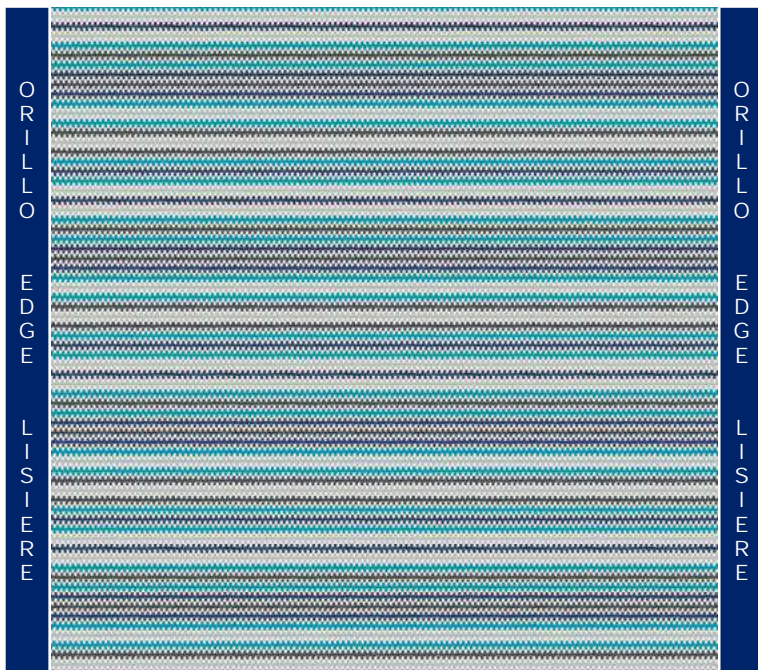
33.72718/2A



33.72718/4J

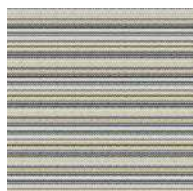
**JOVER**

DESDE 1965

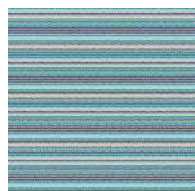


IN&OUT NASIM STRIPE UV TEFLON  
Reference 037289104

Composition: 100%PES  
Useful width in cms: 140 cm.  
Pattern repeat (height): 13  
Pattern repeat (width): 1  
Repeat for cutting cm.: 13  
Design direction: Up the roll  
Weight gsm: 550  
Suitable for upholstery.  
Martindale 90000 cycles.  
Suitable for outdoor use.  
Ligth fastness (max 8): 7  
Pilling (max 5): 5  
Anti-stain  
UV resistant  
Shrinkage (warp): -0,10 %  
Shrinkage (weft): -0,50 %



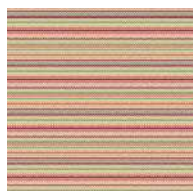
03.72891/14



03.72891/04



03.72891/01



03.72891/05