

100% Blackout fabric

OPACO JAVEA SOFT FR THERMAL & ACOUSTIC



OPACO JAVEA SOFT FR THERMAL & ACOUSTIC
Reference 206532106



Composition: 58%PES 42%PAC
Useful width in cms: 300 cm.
Pattern repeat (height): plain
Pattern repeat (width): 0
Repeat for cutting cm.: plain
Design direction: Railroded
Weight gsm (+/- 5%): 380
Ligth fastness (max 8): 5/6
Pilling (max 5): 4
Fire retardant Clase 1 EN13773
Acoustic absorption coefficient alfa (max 1,00): 0,52 a 1
Shrinkage (warp): -0,20 %
Shrinkage (weft): -0,10 %



INTENDED USE



20.65321/06

100% Blackout fabric

OPACO JAVEA SOFT FR THERMAL & ACOUSTIC



OPACO JAVEA SOFT FR THERMAL & ACOUSTIC
Reference 206532214



Composition: 58%PES 42%PAC
Useful width in cms: 290 cm.
Pattern repeat (height): plain
Pattern repeat (width): 0
Repeat for cutting cm.: plain
Design direction: Railroded
Weight gsm (+/- 5%): 393
Ligth fastness (max 8): 4/5
Pilling (max 5): 4
Fire retardant Clase 1 EN13773
Acoustic absorption coefficient alfa (max 1,00): 0,52 a 1
Shrinkage (warp): -0,20 %
Shrinkage (weft): -0,10 %



INTENDED USE



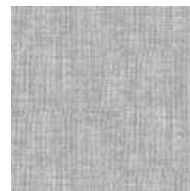
20.65322/10



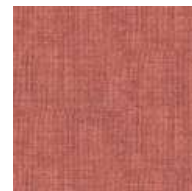
20.65322/13



20.65322/14



20.65322/23



20.65322/28



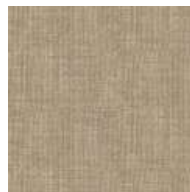
20.65322/31



20.65322/32



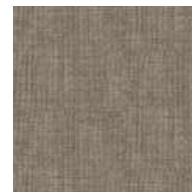
20.65322/37



20.65322/47



20.65322/59



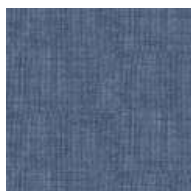
20.65322/67



20.65322/70



20.65322/82



20.65322/84



20.65322/90



20.65322/92

100% Blackout fabric

OPACO JAVEA TWILL FR THERMAL & ACOUSTIC



OPACO JAVEA TWILL FR THERMAL & ACOUSTIC
Reference 206532337



Composition: 58%PES 42%PAC
Useful width in cms: 290 cm.
Pattern repeat (height): plain
Pattern repeat (width): 0
Repeat for cutting cm.: plain
Design direction: Railroded
Weight gsm (+/- 5%): 393
Ligth fastness (max 8): 4/5
Pilling (max 5): 4
Fire retardant Clase 1 EN13773
Acoustic absorption coefficient alfa (max 1,00): 0,52 a 1
Shrinkage (warp): -0,20 %
Shrinkage (weft): -0,10 %



INTENDED USE



20.65323/10



20.65323/13



20.65323/14



20.65323/32



20.65323/37



20.65323/47



20.65323/82



20.65323/92

100% Blackout fabric

OPACO JAVEA TEXTURE FR THERMAL & ACOUSTIC



OPACO JAVEA TEXTURE FR THERMAL & ACOUSTIC
Reference 206532432



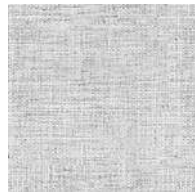
Composition: 58%PES 42%PAC
Useful width in cms: 290 cm.
Pattern repeat (height): plain
Pattern repeat (width): 0
Repeat for cutting cm.: plain
Design direction: Railroded
Weight gsm (+/- 5%): 393
Ligth fastness (max 8): 4/5
Pilling (max 5): 4
Fire retardant Clase 1 EN13773
Acoustic absorption coefficient alfa (max 1,00): 0,52 a 1
% Shrinkage (warp): -0,20
% Shrinkage (weft): -0,10



INTENDED USE



20.65324/10



20.65324/13



20.65324/14



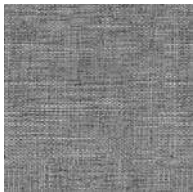
20.65324/32



20.65324/37



20.65324/47



20.65324/82



20.65324/92